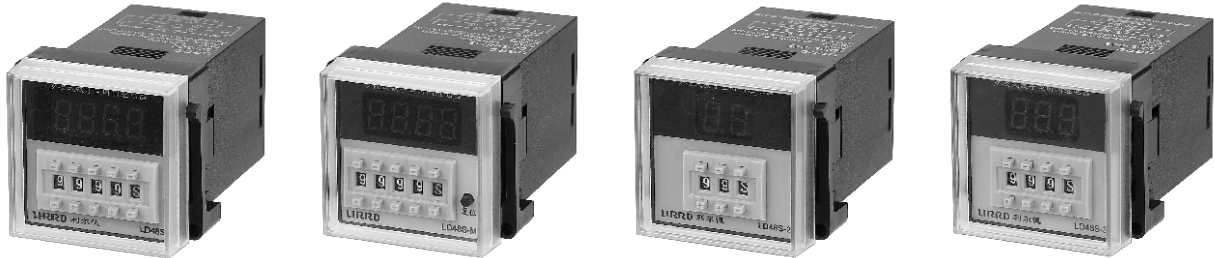


LD48S Series

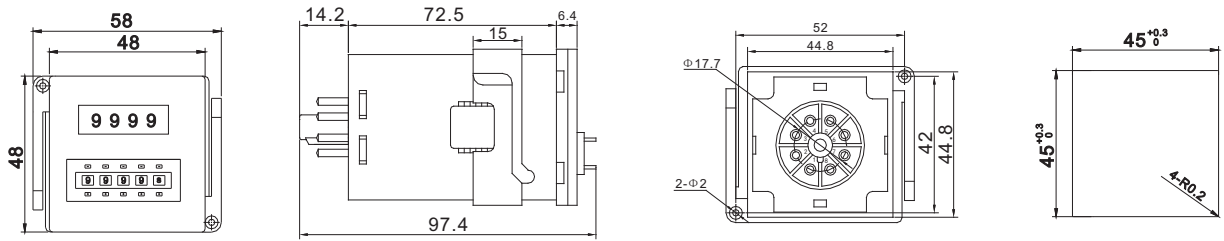


- (1) 4 bits dial code preset time ,with LED display of high bright ,digit height is 0.36 inch.
- (2) 1 bit dial code set and delay multiplying factor ,multiplying factors up to 8 varieties.
- (3) With high performance built-in microchip,taking high accuracy crystal as clock source,the delay accuracy highly up to 0.05%.
- (4) Inpus signal adopts photoelectric coupling isolation to increase the anti-interference capability.
- (5) Wide applicable range for working power,85~265VAC/DC free input.
- (6) DIN (48mm x 48mm) standard panel dimension,with standard 8-pin interface,and is converient to use with matchable base.

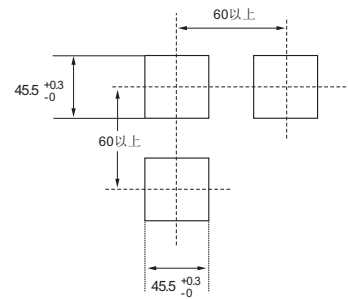
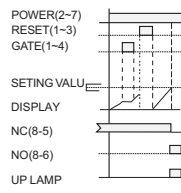
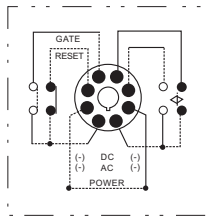
Technical parameters

Class	Multiplex type preset time limit relay			
Type	LD48S	LD48S-MR	LD48S-2	LD48S-3
Delay base	1mS、0.01Sec、0.1Sec、1Sec、1Min、1HR、1Min/Sec、1HR/Min			
Delay range	1-9999 Times base	1-9999 Times base	1-99 Times base	1-999 Times base
Function characteristic	4 bits dial code preset, without panel reset function	4 bits dial code preset, without panel reset function	2 bits dial code preset, without panel reset function	3 bits dial code preset, without panel reset function
Contact capacity	1Z after the type denotes 1 group of relay output ,1+3,denotes reset ,1+4 denotes pause;2Z after the type denotes 2 groups of relays output, contact capacity is impedance load,max 5A/250VAC or 5A/28VDC			
Display mode	2、3 or 4 bits of 0.36 character height LED display with high bright ,decimal point automatically shifts according to the set delay base, at the same time, it is used as sec.flash working indicator light			
Rated working voltage	85~265VAC/DC input free,other voltage upon request			
Accuracy	Voltage affects error,repitive error less than ± 50 PPM and preset error is 0			
Signal input	Reset and pause signal input is contact or NPN (emitter to common terminal 1),adopting photoelectric coupling isolation,signal width should not less than 0.02Sec			
Special function	All types are power on delay mode,power cut memory type (type with E, as LD48SE),delay down mode(type with Y, as LD48SY) and instantaneous release type (type with C, as LD48SC) can be selected,or choose two types of functions in it (type with attach,as LD48SEY is power cut memory delay down mode)			
Installation adn base	Exposed type	P2CF-08		
	Embedded type	Y-50 & US-08 or Y-50&P3G-08		
Power consumption	≤ 4.5 VA			
Operating environment	Ambient temperature:-10~+55 $^{\circ}$ C (nonfreezing) Ambient humidity:35~85%RH			
Noisy immunity	AC2kV(between operating power terminals)or DC ± 500 V,time accumulator works normally under sisturbance of 1uS impulse width			
Scrvic life	Mechanical life: 5×10^6 times,electric life: 1×10^6 times			
Weight	About 103g			

Outline, connecting diagram, sequence chart and tapping size



LD48S-1Z



LD48S-2Z

